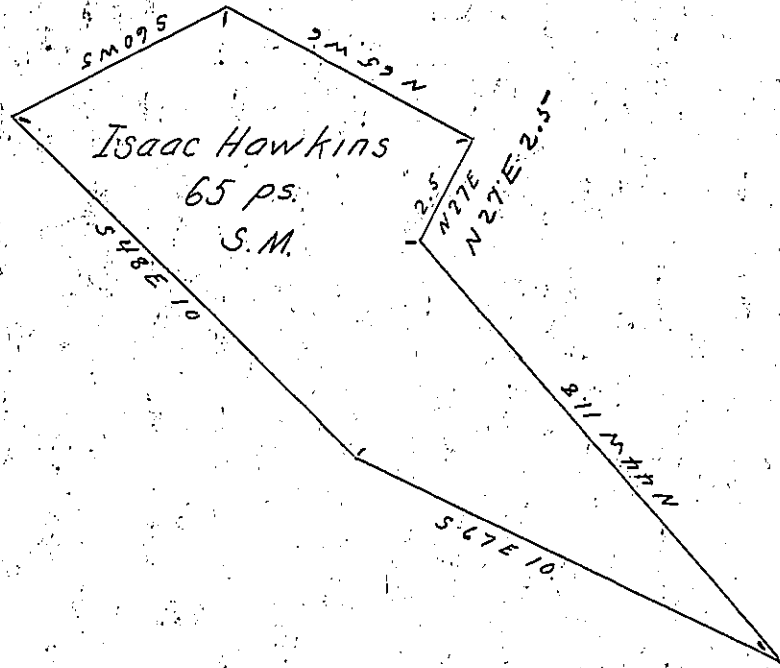


York County Shore



Lancaster County Shore

A Draught of High Island situate in the river Susquehanna Little Britain township Lancaster County lying between Caldwell's Island & the Age Island above the ferry course & opposite John Kirks land & M<sup>c</sup> Sparose. Containing sixty<sup>five</sup> perches Strict Measure Surveyed in pursuance of a Warrant dated 18<sup>th</sup> day of October 1815 Granted to Isaac Hawkins.

To Jacob Spangler Esq. } pr Jacob Hibshman D.S.  
Surveyor General

IN TESTIMONY that the above is a copy of the original remaining on file in the Department of Internal Affairs of Pennsylvania, made conformably to an Act of Assembly approved the 16th day of February, 1833, I have hereunto set my Hand and caused the Seal of said Department to be affixed at Harrisburg, this twenty first day of March 1905.

*James R. Brown*  
Secretary of Internal Affairs.